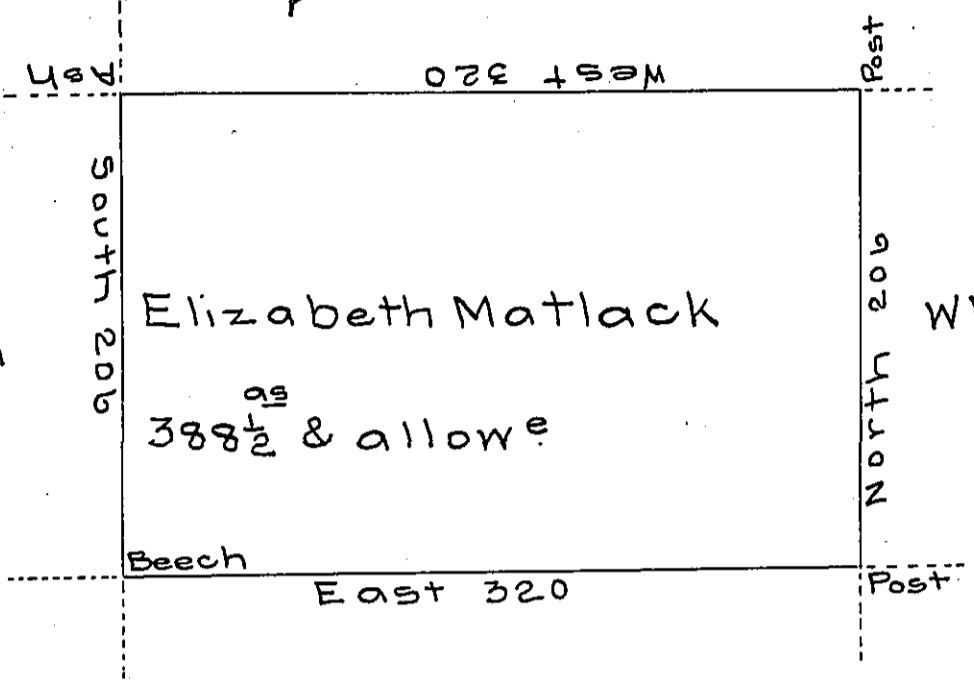


PAGE-206

William Murray
PAGE-244

Renold Keen
C-104-226



Wm Dawes

C-167-86

Paul Cooper
C-138

Draught of a tract of land called _____ situate
 joining land surv^d for Benja Lounsby and oth-
 ers in Luzern—(formerly North^d) County three
 hundred & eighty eight acres $\frac{1}{2}$ & allowe of six ϕ
 cent for roads & surv^d for Elizabeth Matlack
 the 24th day of August 1787 in pursuance of a war-
 rant dated the 27th day of July 1787

To John Lukens Esqr } by
 Surv^r Gen! } Wm Gray D.S.

IN TESTIMONY that the above is a copy of the original remaining on file in
 the Department of Internal Affairs of Pennsylvania, made
 conformably to an Act of Assembly approved the 16th day of
 February, 1833, I have hereunto set my Hand and caused
 the Seal of said Department to be affixed at Harrisburg,
 this nineteenth day of January 1906

Isaac P. Brown
 Secretary of Internal Affairs.